

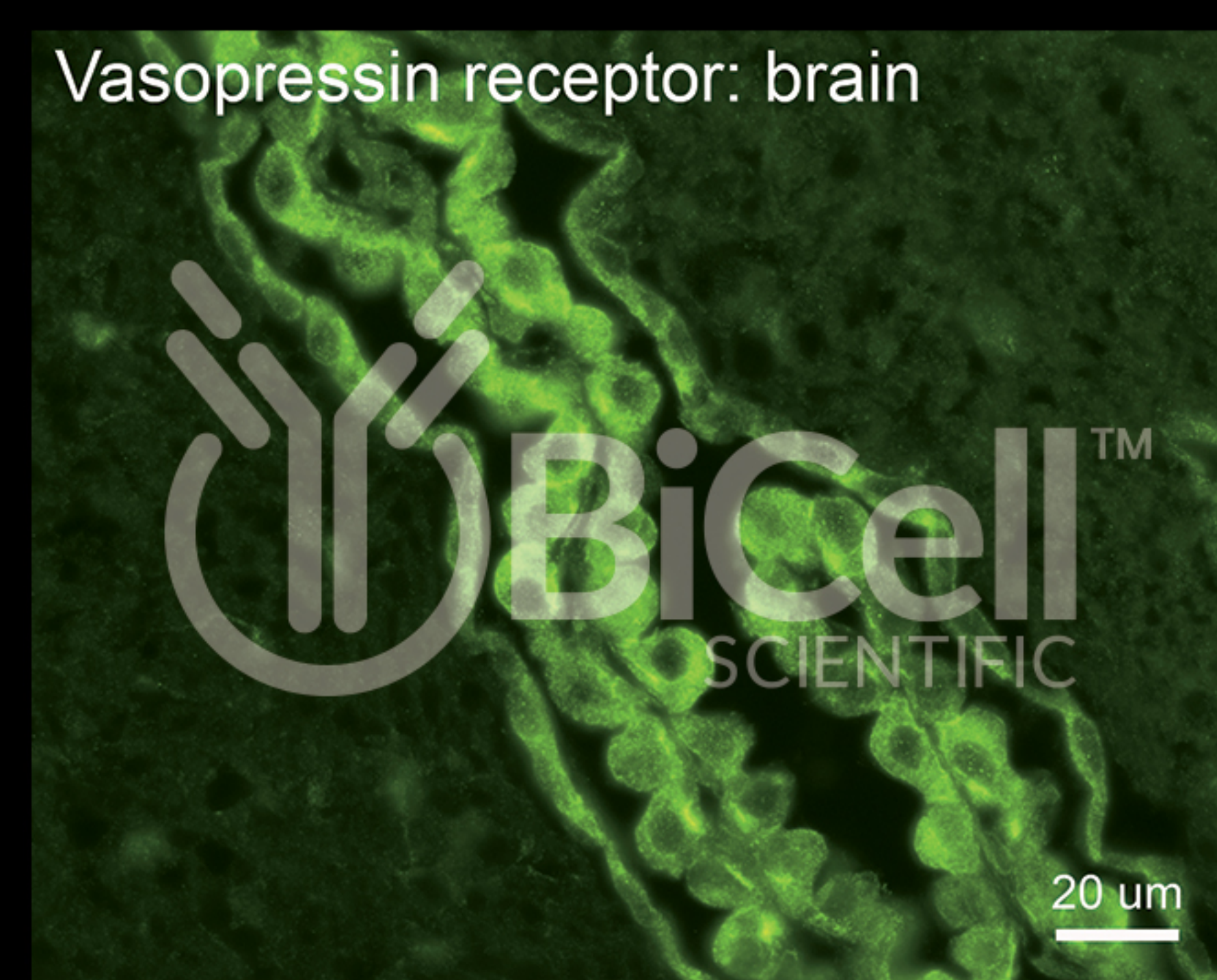
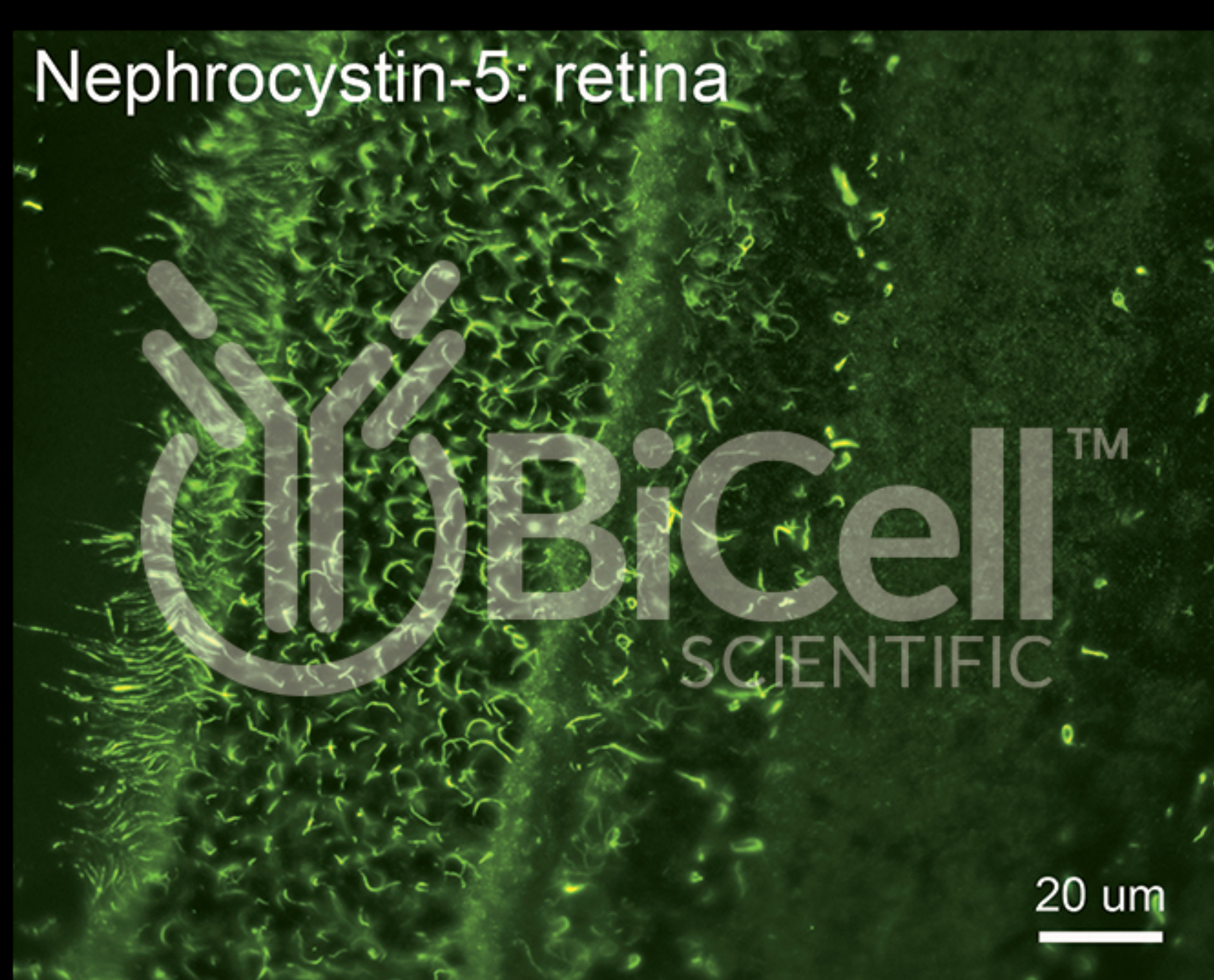
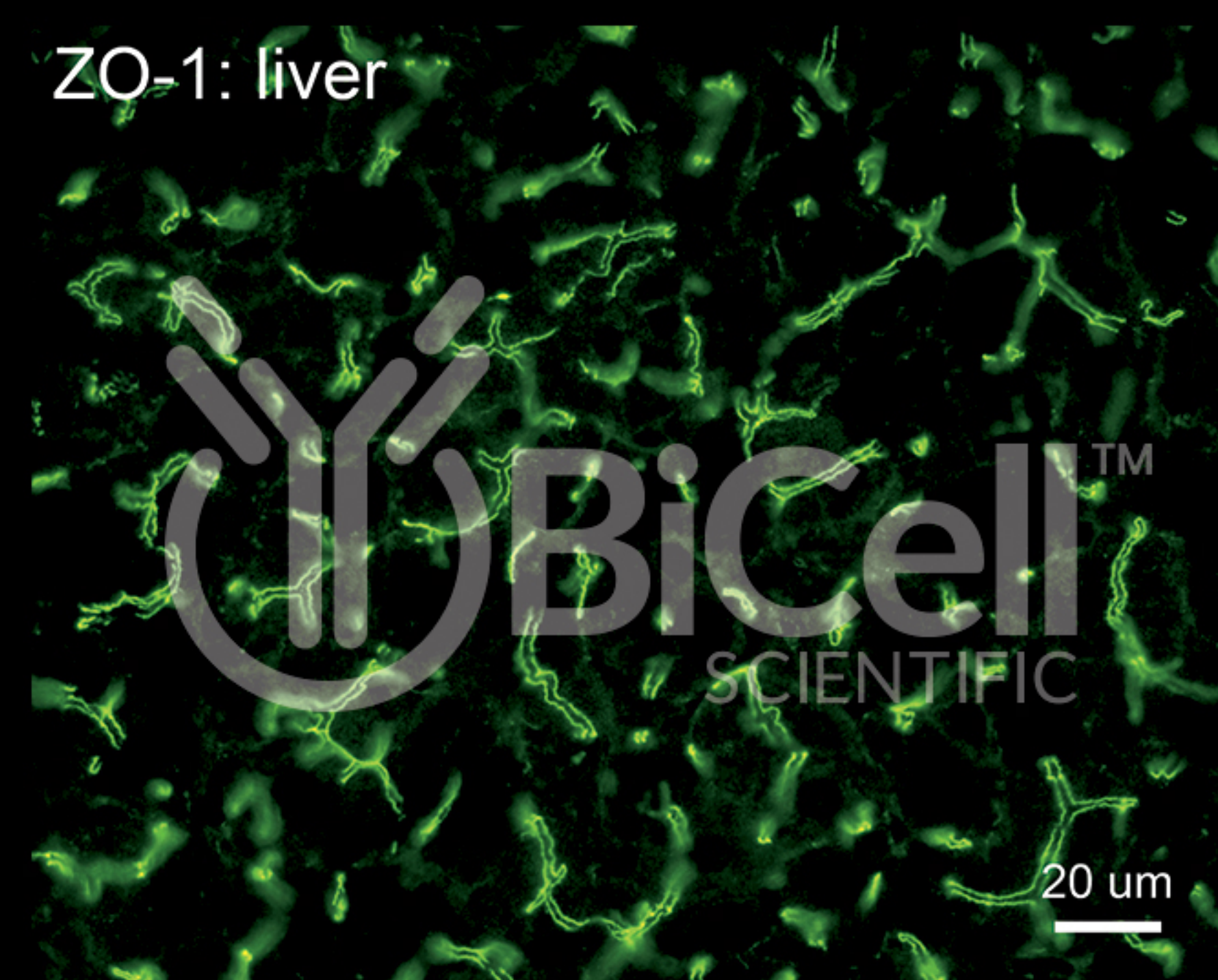
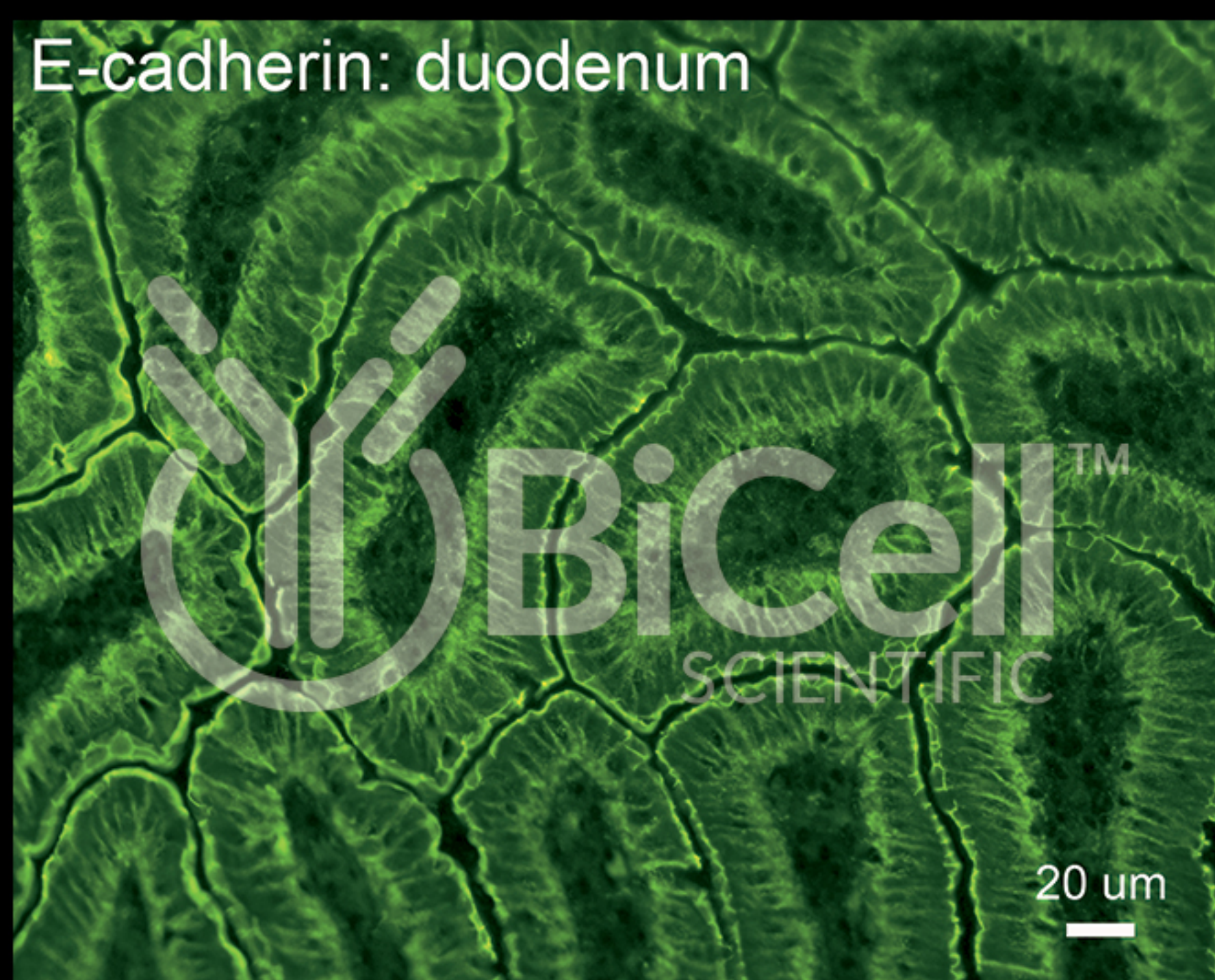


# The Foundation of Biomedical Research

[BiCellScientific.com](http://BiCellScientific.com)

✉ Customer Support: [customercare@BiCellScientific.com](mailto:customercare@BiCellScientific.com)

📍 Mailing Address: 11466 Schenk Drive • Maryland Heights, MO 63043 USA







# Ion Channel / Transporter Protein Antibody

## Validated Aquaporin-1 Antibody

Catalog Number:  
20101

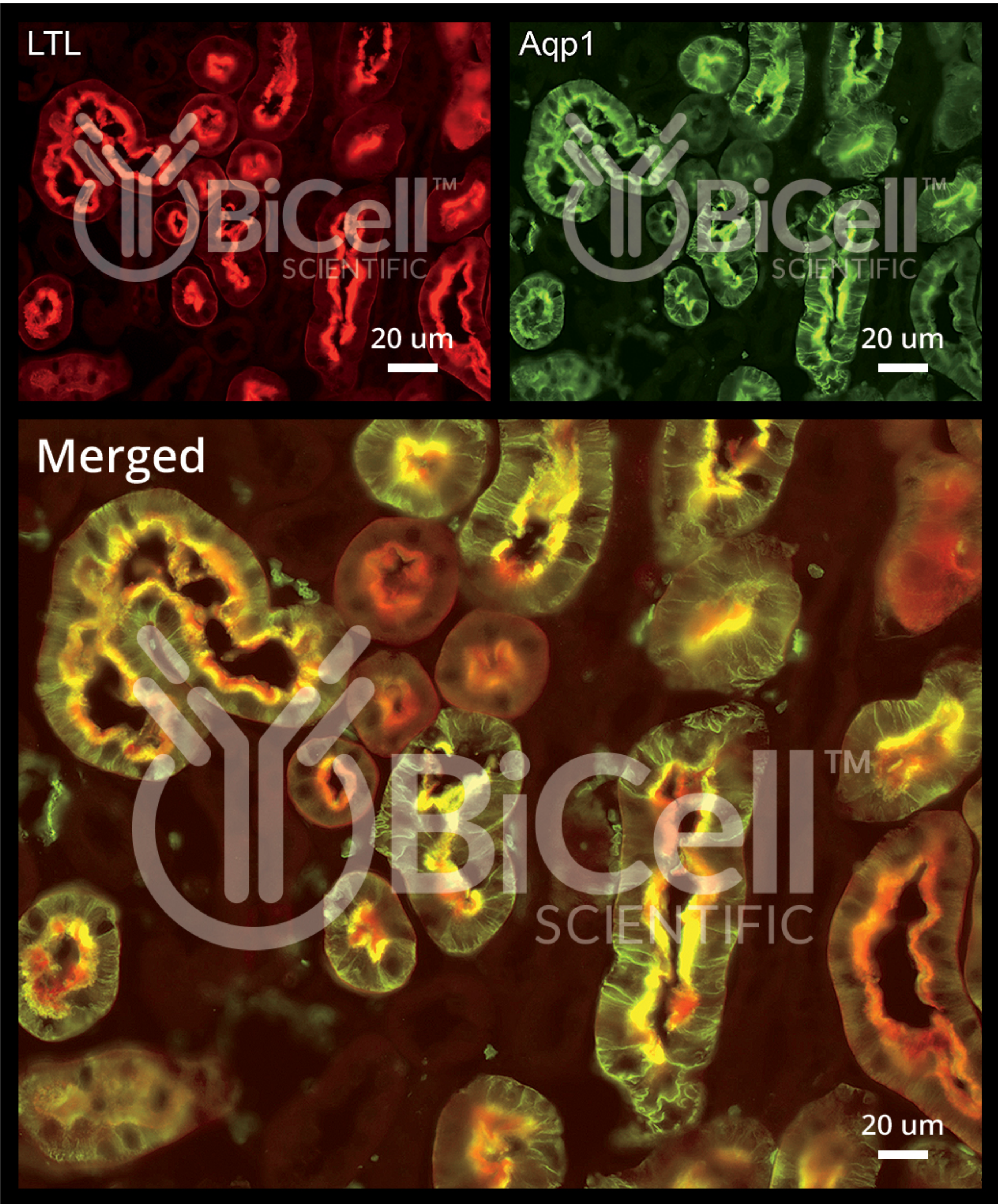
Antibody:  
Rabbit Polyclonal Antibody

Concentration:  
0.25 mg/ml purified IgG

Application:  
Validated by  
immunofluorescence  
labeling (1:100)

Reactivity:  
Human, Mouse, Rat

Overview:  
Aquaporin, also known as water channel, mediates water permeation across the cell membrane. There are approximately 10 aquaporin genes in human genome. Aquaporin proteins are composed of six transmembrane domains, three extracellular loops, two intracellular loops and two intracellular termini.







# Cell Junction Protein Antibody

## Validated E-cadherin Antibody

Catalog Number:  
00101

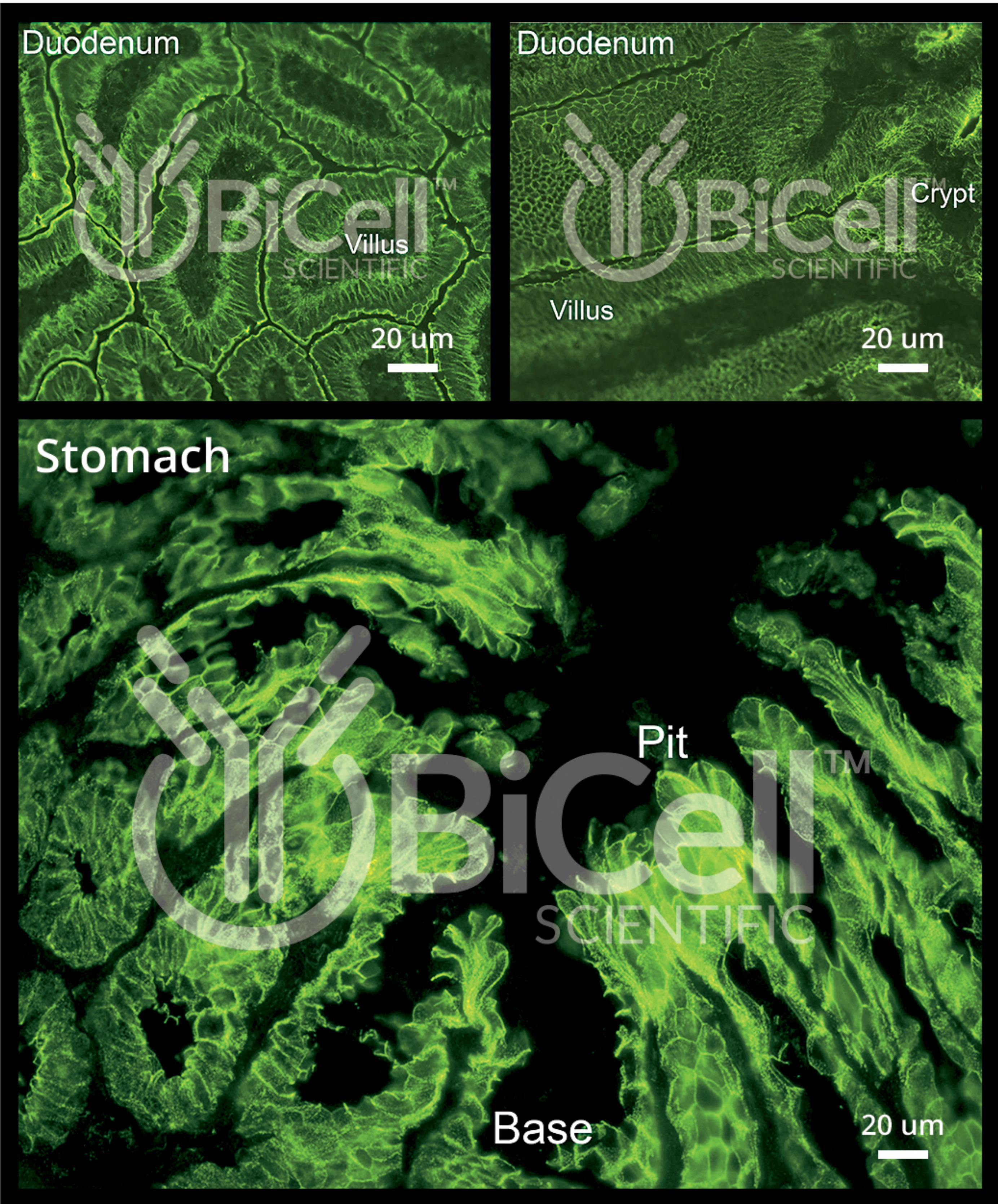
Antibody:  
Rabbit Polyclonal Antibody

Concentration:  
0.25 mg/ml purified IgG

Application:  
Validated by  
immunofluorescence  
labeling (1:100)

Reactivity:  
Human, Mouse, Rat

Overview:  
E-cadherin is a protein that is encoded by the Cdh1 gene in human. E-cadherin is also known as Cadherin-1 or CAM 120/80 or uvomorulin or CD324. E-cadherin belongs to the classic cadherin protein superfamily and may act as a tumor suppressor.







# Cell Junction Protein Antibody

## Validated Beta-catenin Antibody

Catalog Number:  
00152

Antibody:  
Rabbit Polyclonal Antibody

Concentration:  
0.25 mg/ml purified IgG

Application:  
Validated by  
immunofluorescence  
labeling (1:100)

Reactivity:  
Human, Mouse, Rat

Overview:  
Beta-catenin is encoded by the CTNNB1 gene in human. Beta-catenin belongs to a protein family known as catenins. Catenins are the linker proteins that connect adherens junction to the underlying cytoskeleton. Beta-catenin is widely expressed in epithelial and endothelial tissues.







# Cell Junction Protein Antibody

## Validated Claudin-1 Antibody

Catalog Number:  
00201

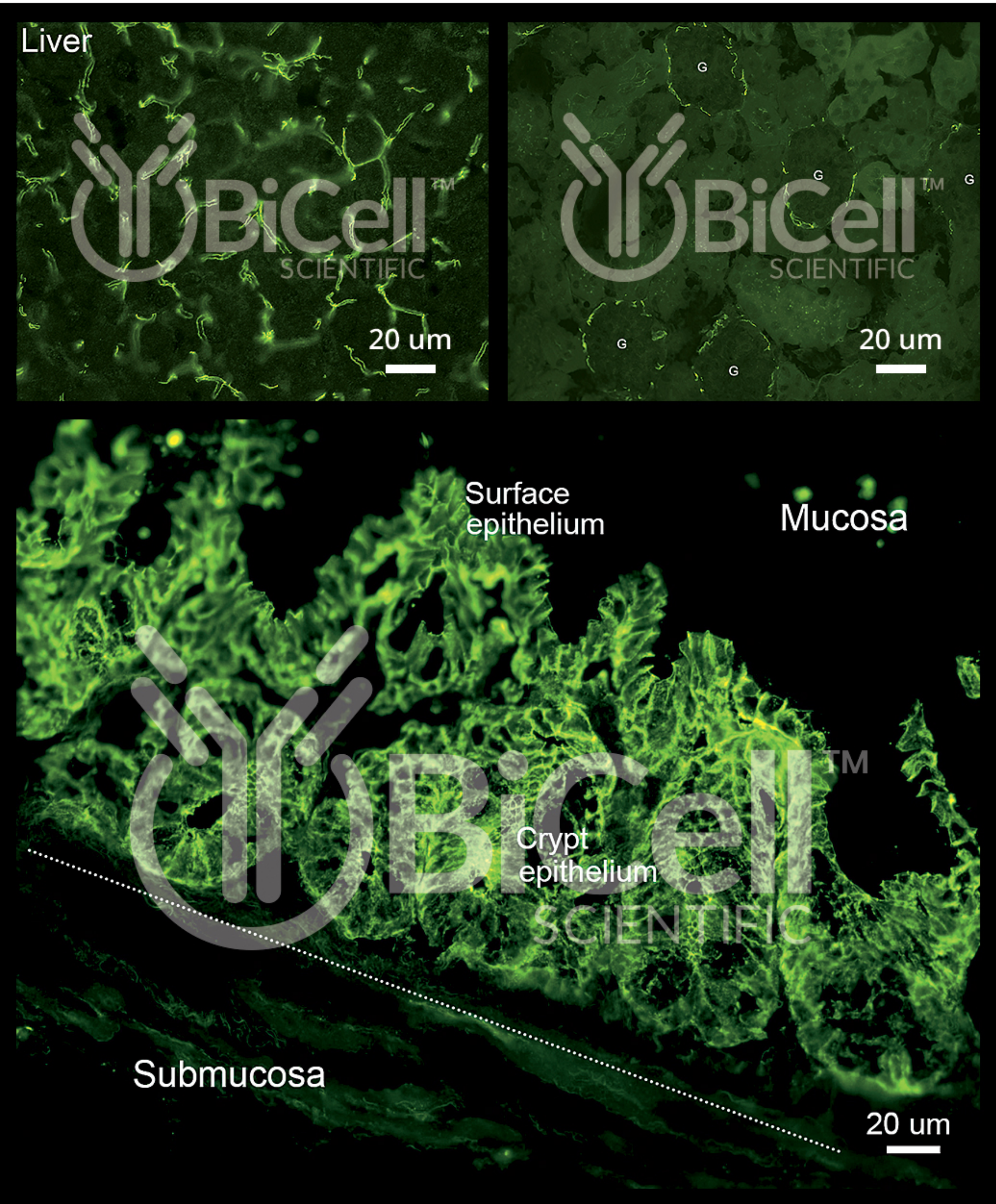
Antibody:  
Rabbit Polyclonal Antibody

Concentration:  
0.25 mg/ml purified IgG

Application:  
Validated by  
immunofluorescence  
labeling (1:100)

Reactivity:  
Human, Mouse, Rat

Overview:  
Claudin-1 is a protein that is encoded by the CLDN1 gene in human. Claudin-1 belongs to the Claudin protein superfamily. Claudins are tetraspan proteins making the tight junction. Claudin-1 is primarily expressed by the epithelium of the skin, the liver, the intestine, the kidney, and the choroid plexus.







# Cell Junction Protein Antibody

## Validated LSR Antibody

Catalog Number:  
00301

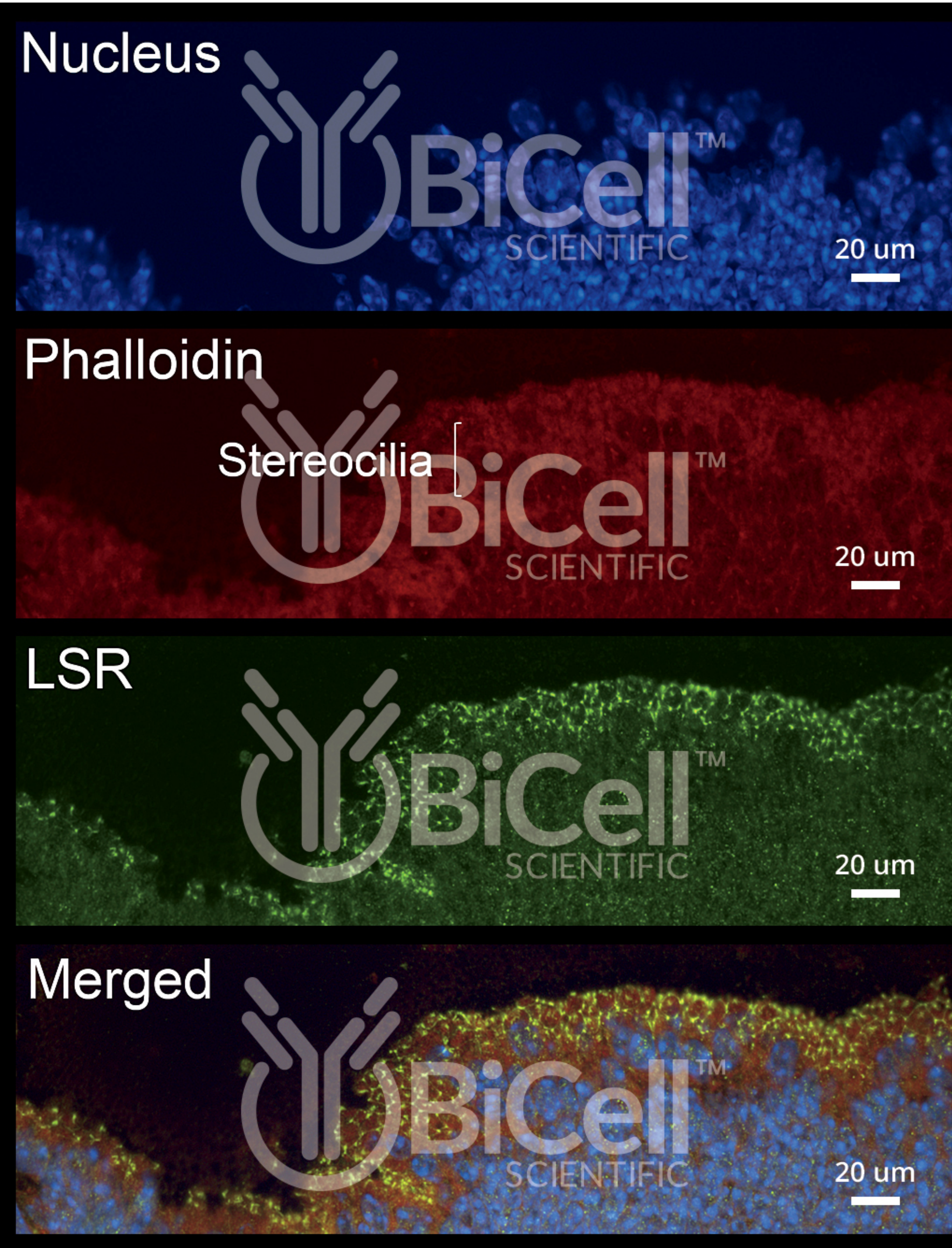
Antibody:  
Rabbit Polyclonal Antibody,  
Affinity Purified

Concentration:  
0.25 mg/ml

Application:  
Validated by  
immunofluorescence  
labeling (1:100)

Reactivity:  
Human, Mouse, Rat

Overview:  
LSR, which stands for lipolysis-stimulated lipoprotein receptor, also known as angulin-1, belongs to the angulin protein family, which makes the tricellular tight junction in epithelium or endothelium. LSR is encoded by the LSR gene in human.







# Cell Matrix Interaction Antibody

## Validated Integrin Alpha-3 Antibody

Catalog Number:  
10003

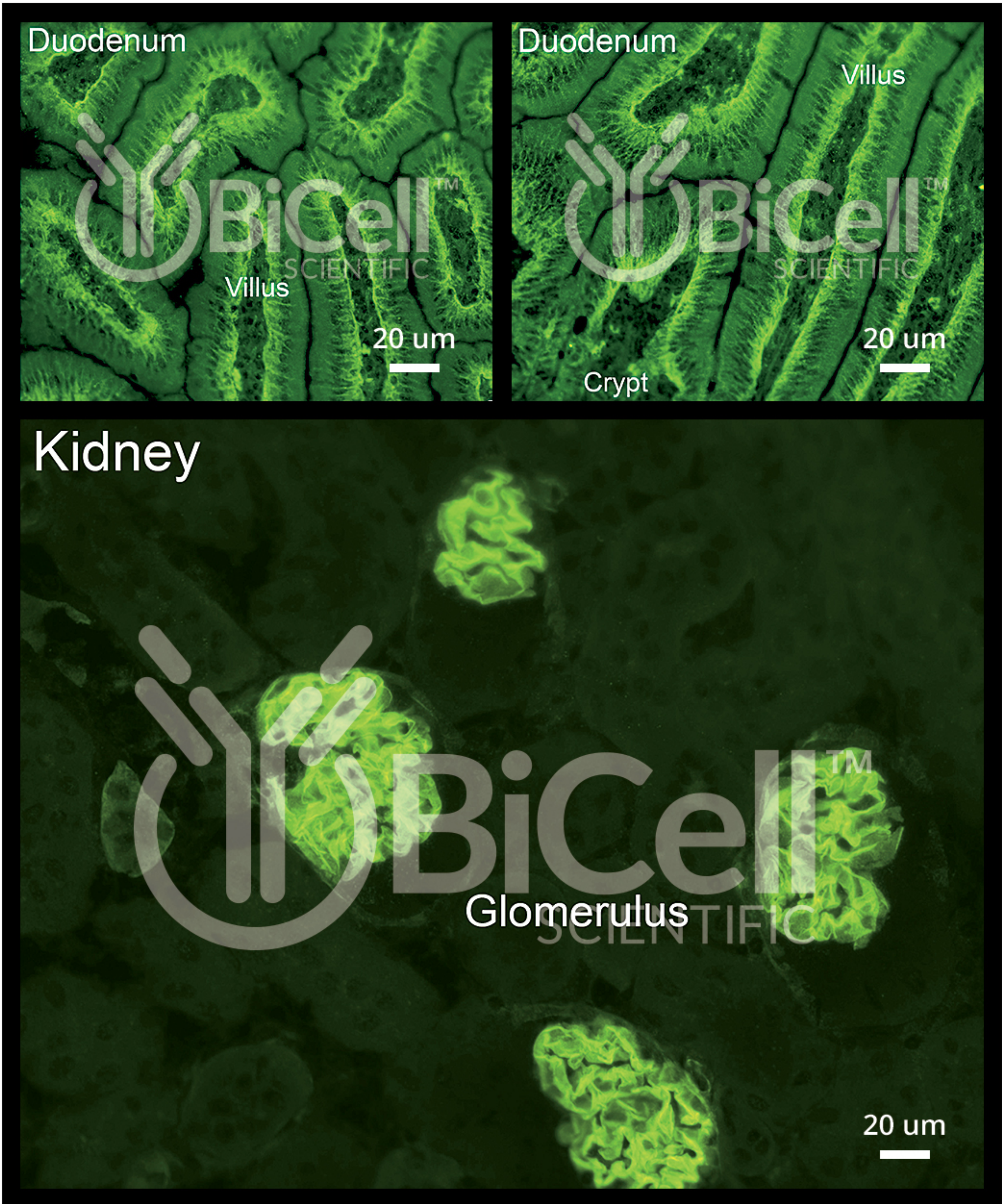
Antibody:  
Rabbit Polyclonal Antibody

Concentration:  
0.25 mg/ml purified IgG

Application:  
Validated by  
immunofluorescence  
labeling (1:100)

Reactivity:  
Human, Mouse, Rat

**Overview:**  
Integrins are transmembrane proteins that facilitate cell-extracellular matrix interactions or focal adhesions. Ligands for Integrins include fibronectin, vitronectin, collagen and laminin. An integrin molecule is composed of two protein subunits, alpha and beta. Integrin alpha-3 is highly expressed by the epithelial tissues.







# Cellular Signaling Protein Antibody

## Validated FAT1

Catalog Number:  
50501

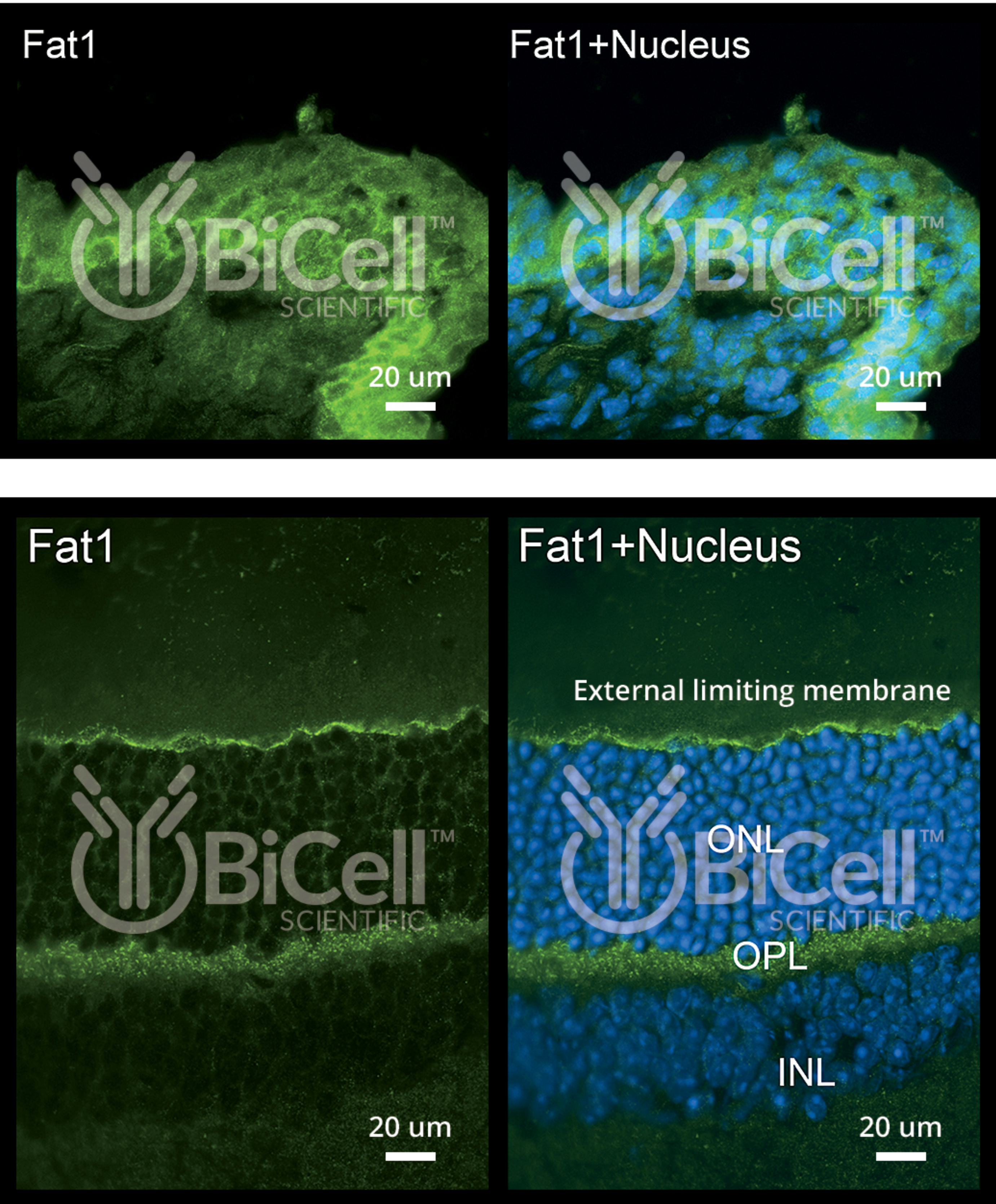
Antibody:  
Rabbit Polyclonal Antibody

Concentration:  
0.25 mg/ml purified IgG

Application:  
Validated by  
immunofluorescence  
labeling (1:100)

Reactivity:  
Human, Mouse, Rat

**Overview:**  
Protocadherin FAT1 is a protein that is encoded by the FAT1 gene in human. This gene is an orthologue of the Drosophila fat gene. FAT1 is involved in establishing the planar polarity in Drosophila cells. FAT1 is highly expressed in the external limiting membrane of the retina, where the photoreceptor cells make cell junctions with the muller cells.







# Mendelian Disease Protein Antibody

## Validated Collagen alpha-5 (IV) Antibody

Catalog Number:  
05005

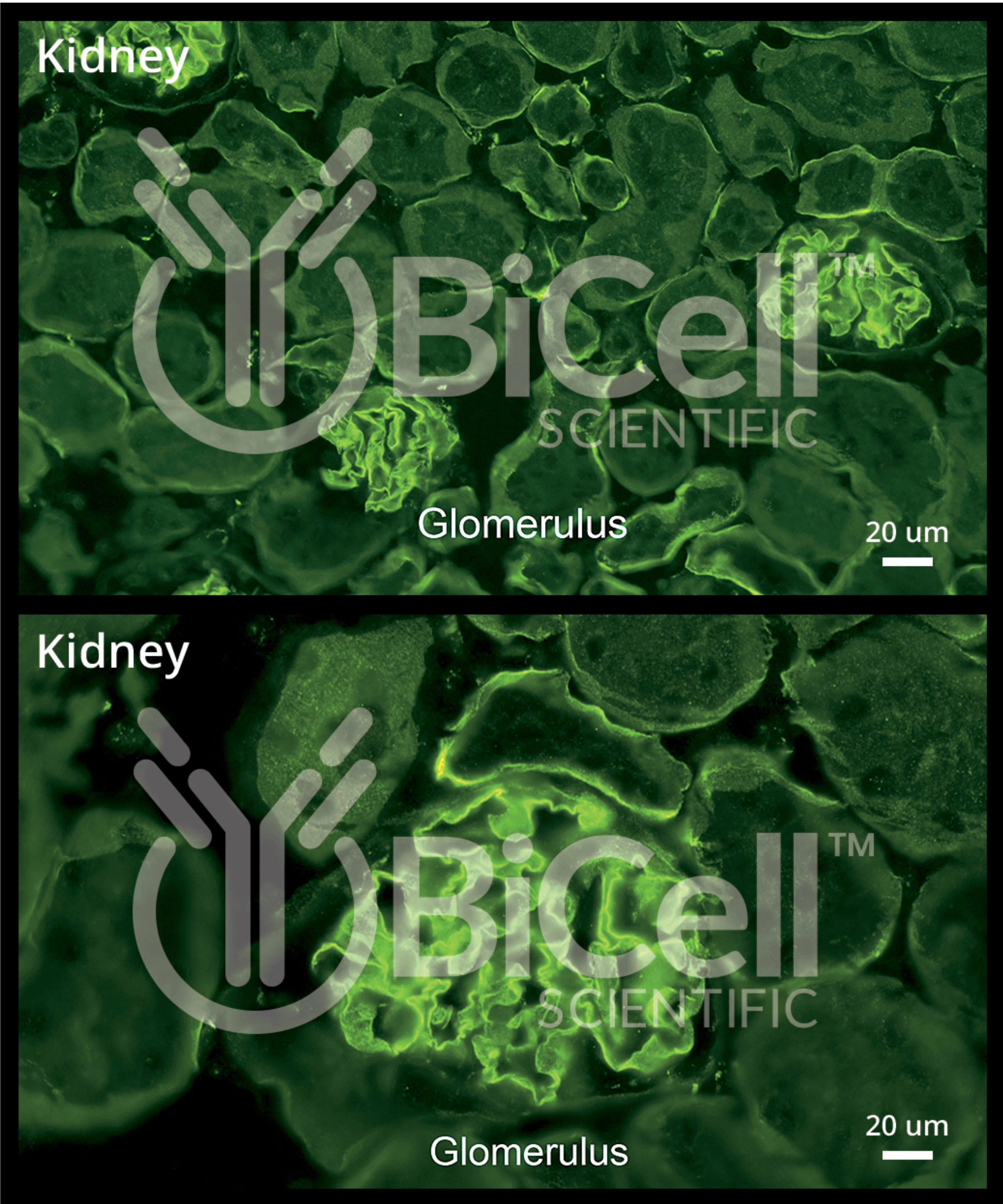
Antibody:  
Rabbit Polyclonal Antibody

Concentration:  
0.25 mg/ml purified IgG

Application:  
Validated by  
immunofluorescence  
labeling (1:100)

Reactivity:  
Human, Mouse, Rat

Overview:  
Collagen, type IV, alpha-5 chain is a protein that is encoded by the COL4A5 gene in human. Type IV collagen is the major structural component of the glomerular basement membrane (GBM). Type IV collagen is a triple helical oligomer formed by 3 alpha chain molecules. Type IV collagen is found in the ear, the eye, and the kidney.







# Mendelian Disease Protein Antibody

## Validated Pendrin Antibody

Catalog Number:  
20501

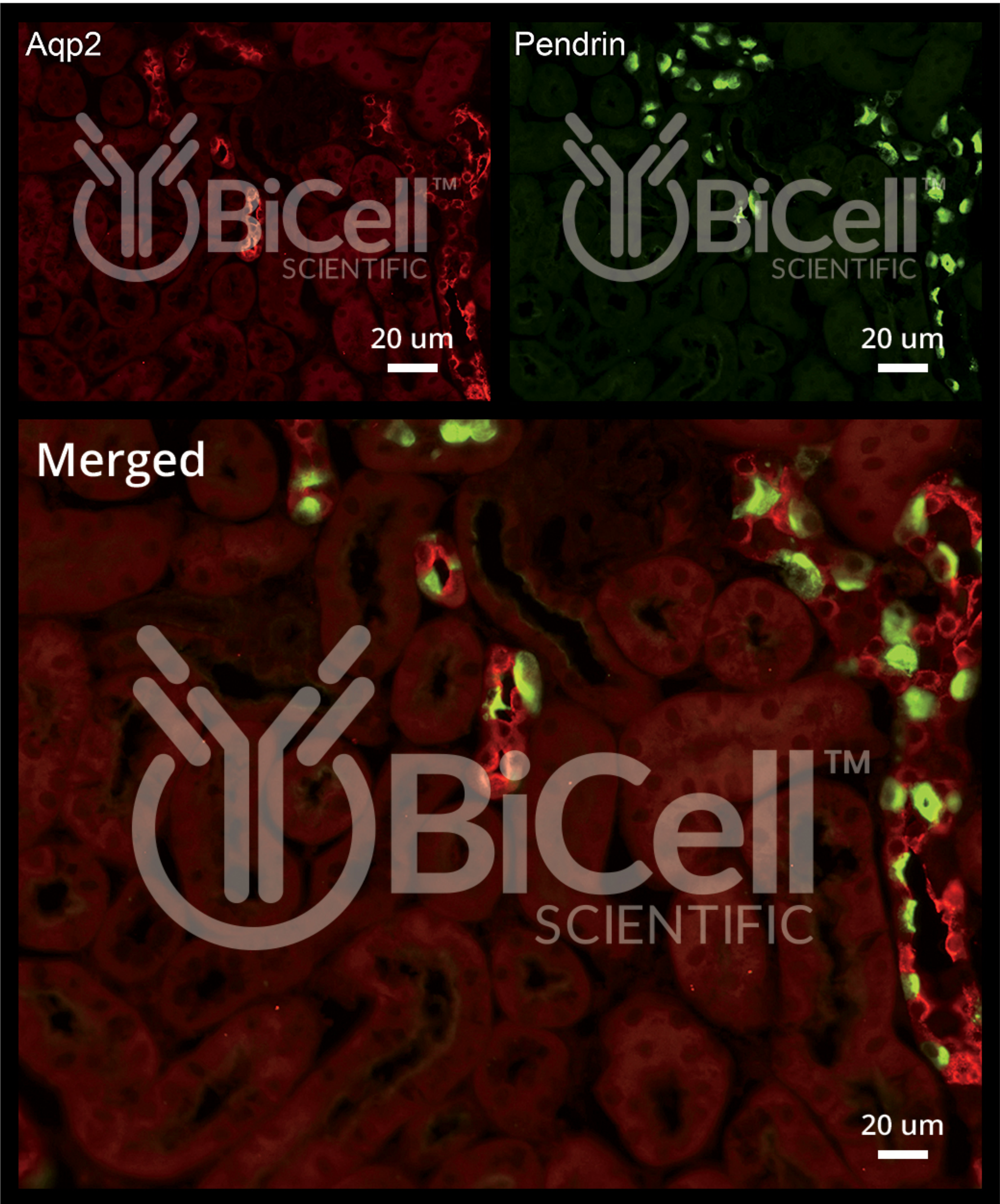
Antibody:  
Rabbit Polyclonal Antibody

Concentration:  
0.25 mg/ml purified IgG

Application:  
Validated by  
immunofluorescence  
labeling (1:100)

Reactivity:  
Human, Mouse, Rat

Overview:  
Pendrin is an anion exchanger that is encoded by the Slc26a4 gene in human. Pendrin mediates electroneutral exchange of chloride for bicarbonate across the plasma membrane of epithelial cells. Pendrin is a complex membrane protein with 12 transmembrane domains and molecular weight of 86 kDa.







# Mendelian Disease Protein Antibody

## Validated WNK4 Antibody

Catalog Number:  
50004

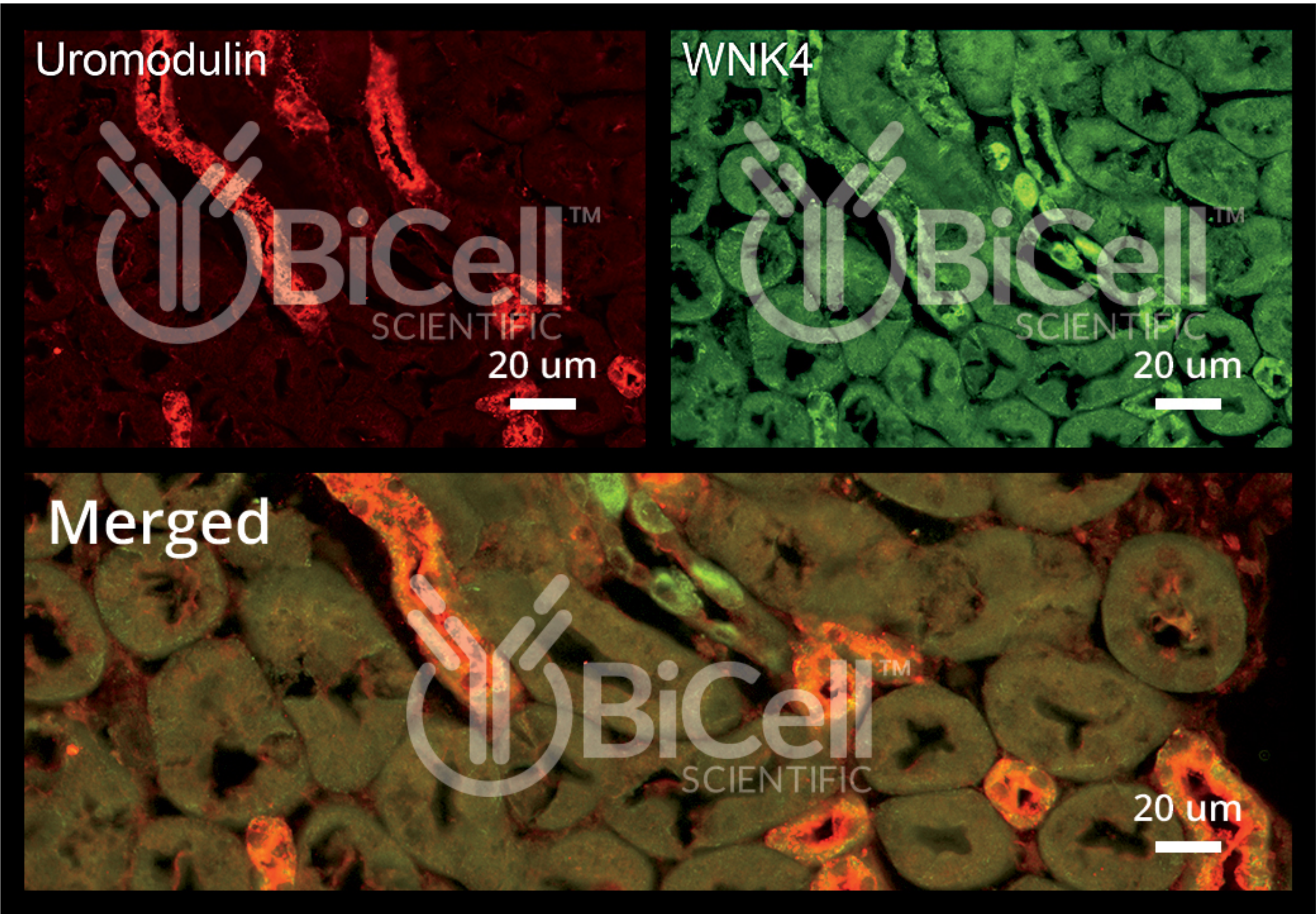
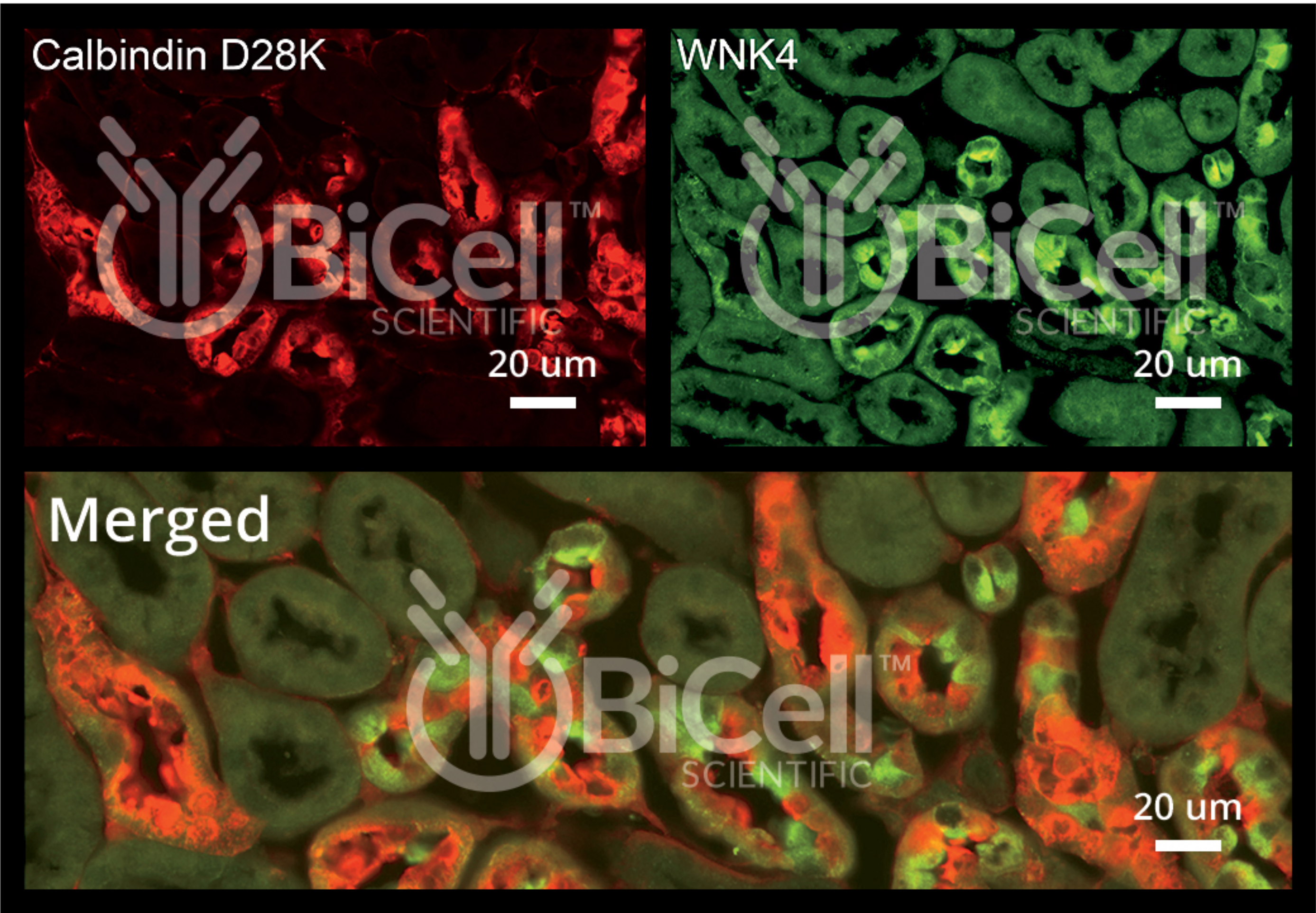
Antibody:  
Rabbit Polyclonal Antibody

Concentration:  
0.25 mg/ml purified IgG

Application:  
Validated by  
immunofluorescence  
labeling (1:100)

Reactivity:  
Human, Mouse, Rat

Overview:  
WNK lysine deficient protein kinase 4 or WNK4 is an enzyme that is encoded by the WNK4 gene in human.







# Mendelian Disease Protein Antibody

## Validated Nephrocystin-5 Antibody

Catalog Number:  
90005

Antibody:  
Rabbit Polyclonal Antibody

Concentration:  
0.25 mg/ml purified IgG

Application:  
Validated by  
immunofluorescence  
labeling (1:100)

Reactivity:  
Human, Mouse, Rat

Overview:  
Nephrocystin-5 (NPHP5), also known as IQCB1 (IQ calmodulin - binding motif containing protein 1), is a component of the primary cilium. Is encoded by the IQCB1 gene in human. Nephrocystin-5 can interact with multiple BBS proteins and may participate in the entry of the BBSome complex to the primary cilium.

